

JONESBOROUGH PRESBYTERIAN CHURCH

EDUCATION WING RENOVATION/ADDITION

CURRENT STATUS

- Renovation Task Team has defined needs, space requirements, and construction approach
- Plans are complete, awaiting estimate
- Historical Zoning Commission supports current plans
- Session has approved concept & funding
- Church finances are extremely healthy
- Options in construction are defined, waiting on price
- Goal is to have shell & roof done before winter snows
- Renovation of existing space begins once roof is completed
- Addition buildout begins once renovation is completed

FREQUENTLY ASKED QUESTIONS

▶ WHY?

- ▶ MUSIC PROGRAM IS OVERFLOWING AVAILABLE SPACE; HAS NO PRACTICE ROOM
- ▶ CHURCH IS BEING USED BY MORE EVENTS, AVAILABLE ROOMS INADEQUATE
- ▶ YOUTH GROUP IS GROWING, NEEDS UPDATED MEDIA, MORE SPACE
- ▶ NO AVAILABLE STORAGE FOR MUSIC, YOUTH, SEASONAL PROGRAMS

▶ WHY NOW?

- ▶ CHURCH IS IN GREAT FINANCIAL SHAPE
- ▶ NEED IS NOW, WE ARE A VIBRANT, GROWING CHURCH. NEED TO BE PROACTIVE, NOT REACTIVE

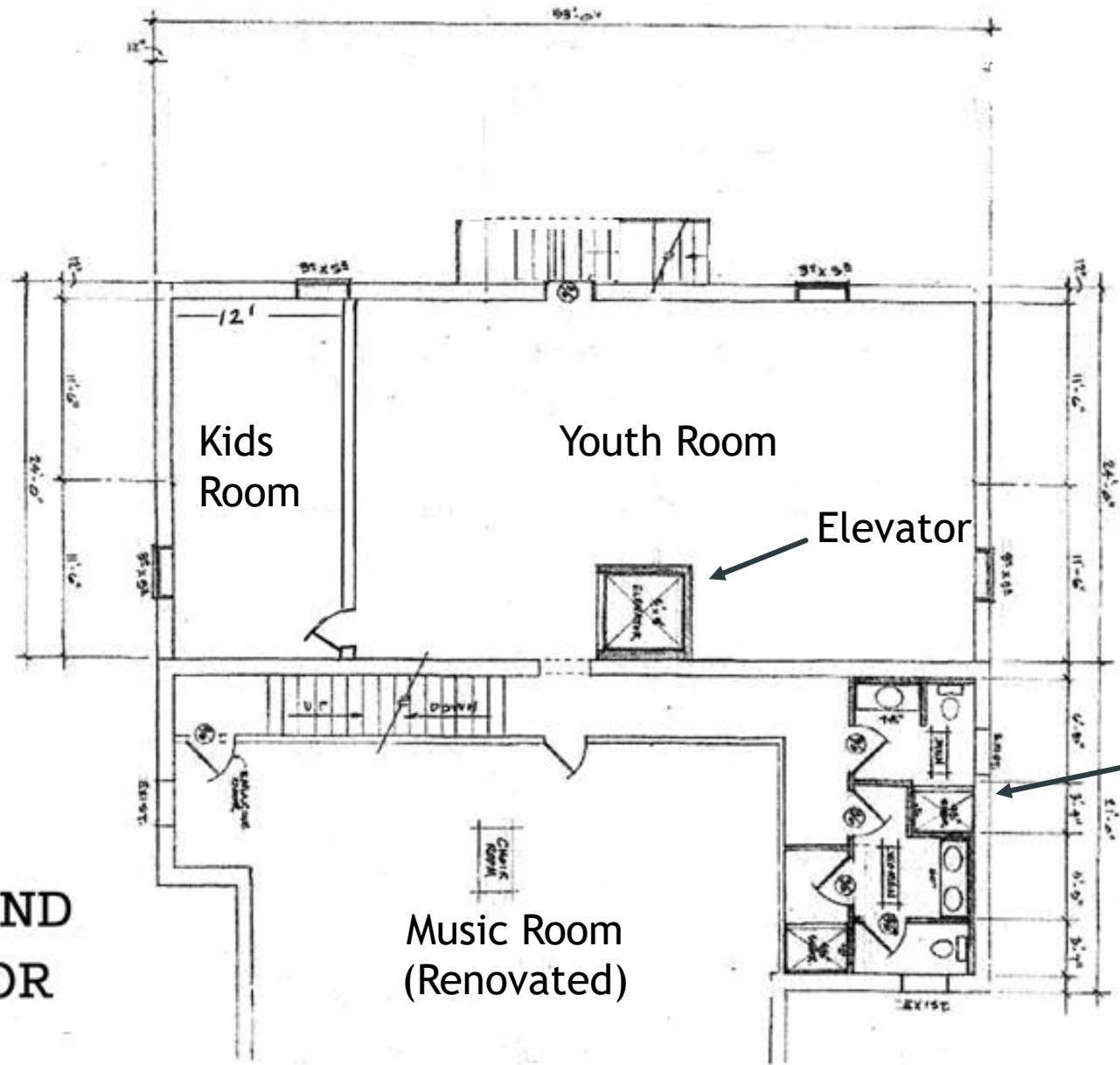
▶ WHY NOT INVEST THE FUNDS IN PARKING

- ▶ CHURCH IS LAND-LOCKED, NO SPACE AVAILABLE ON CHURCH PROPERTY
- ▶ PARKING IS AVAILABLE WITHIN REASONABLE DISTANCE (NEXT CHART)

EDUCATION WING TOUR



**SECOND
FLOOR**



Elevator

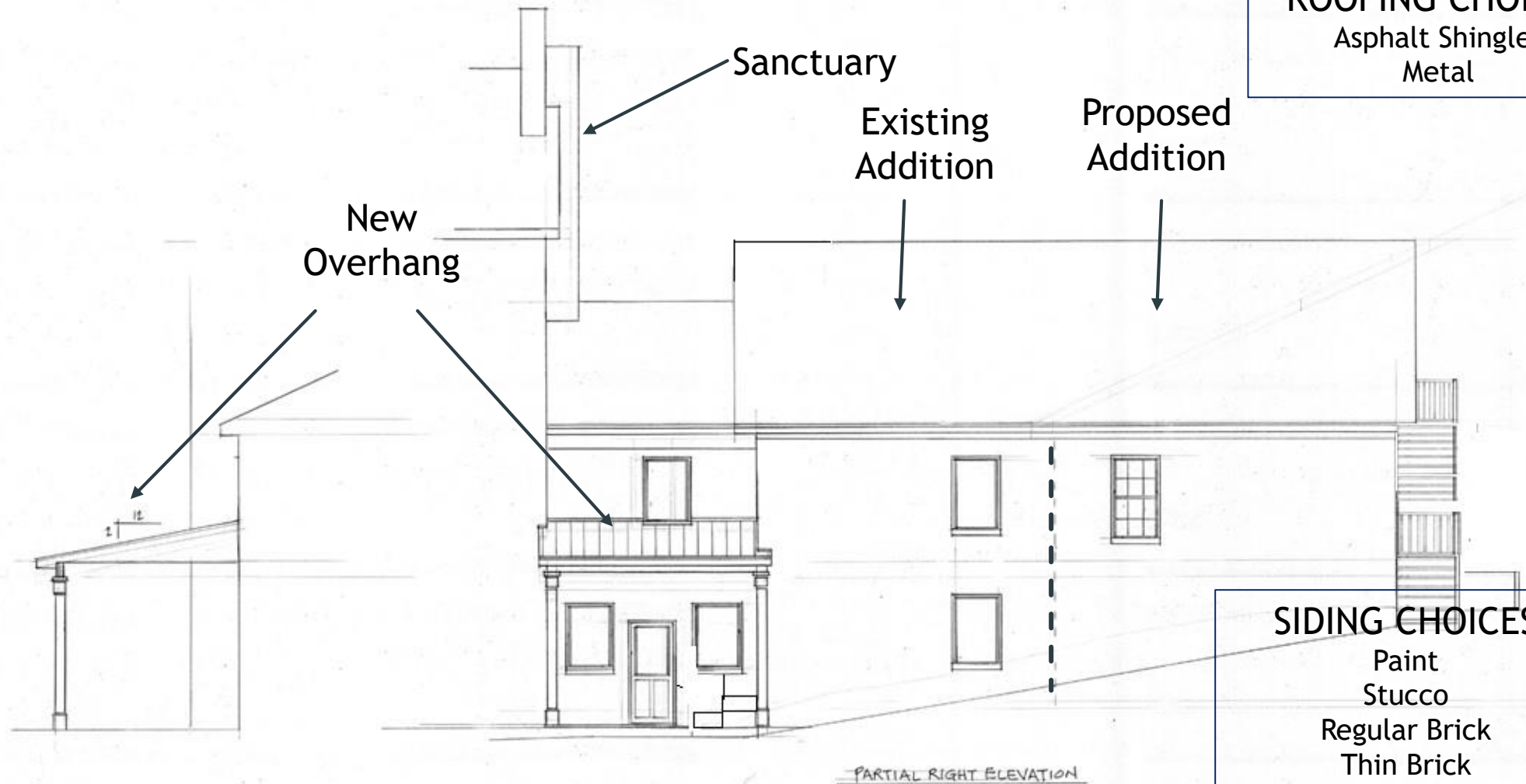
New Handicap
Accessible
Restrooms
(former AZ
Howard Room)

Music Room
(Renovated)

Kids
Room

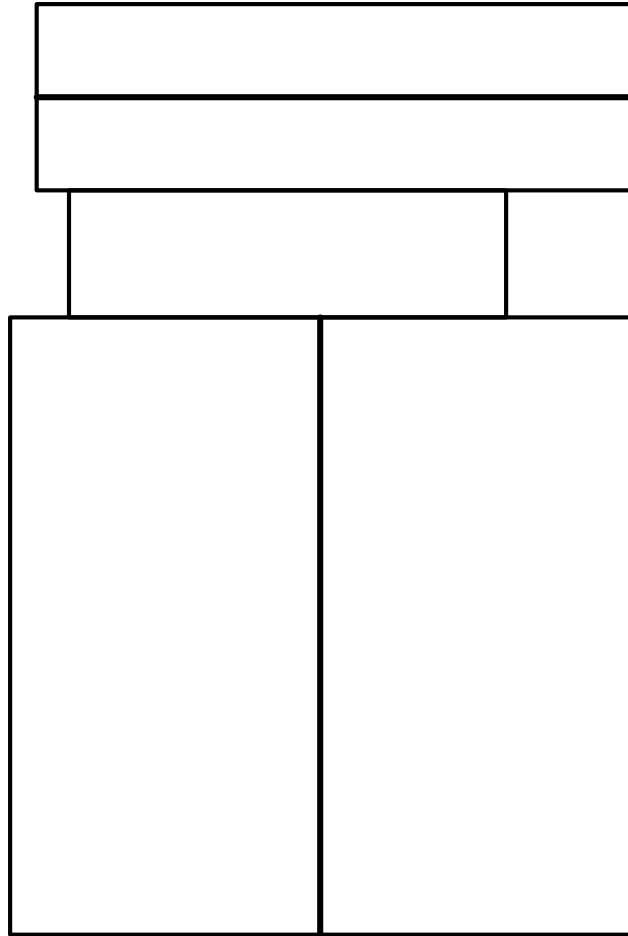
Youth Room

ROOFING CHOICES
Asphalt Shingles
Metal

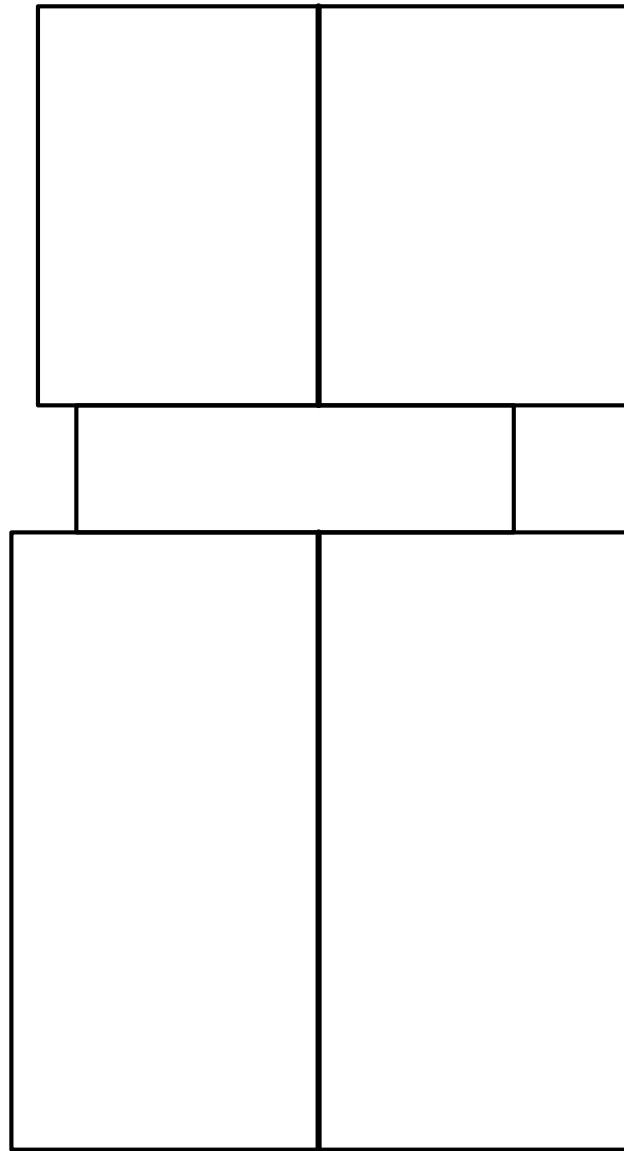


SIDING CHOICES
Paint
Stucco
Regular Brick
Thin Brick

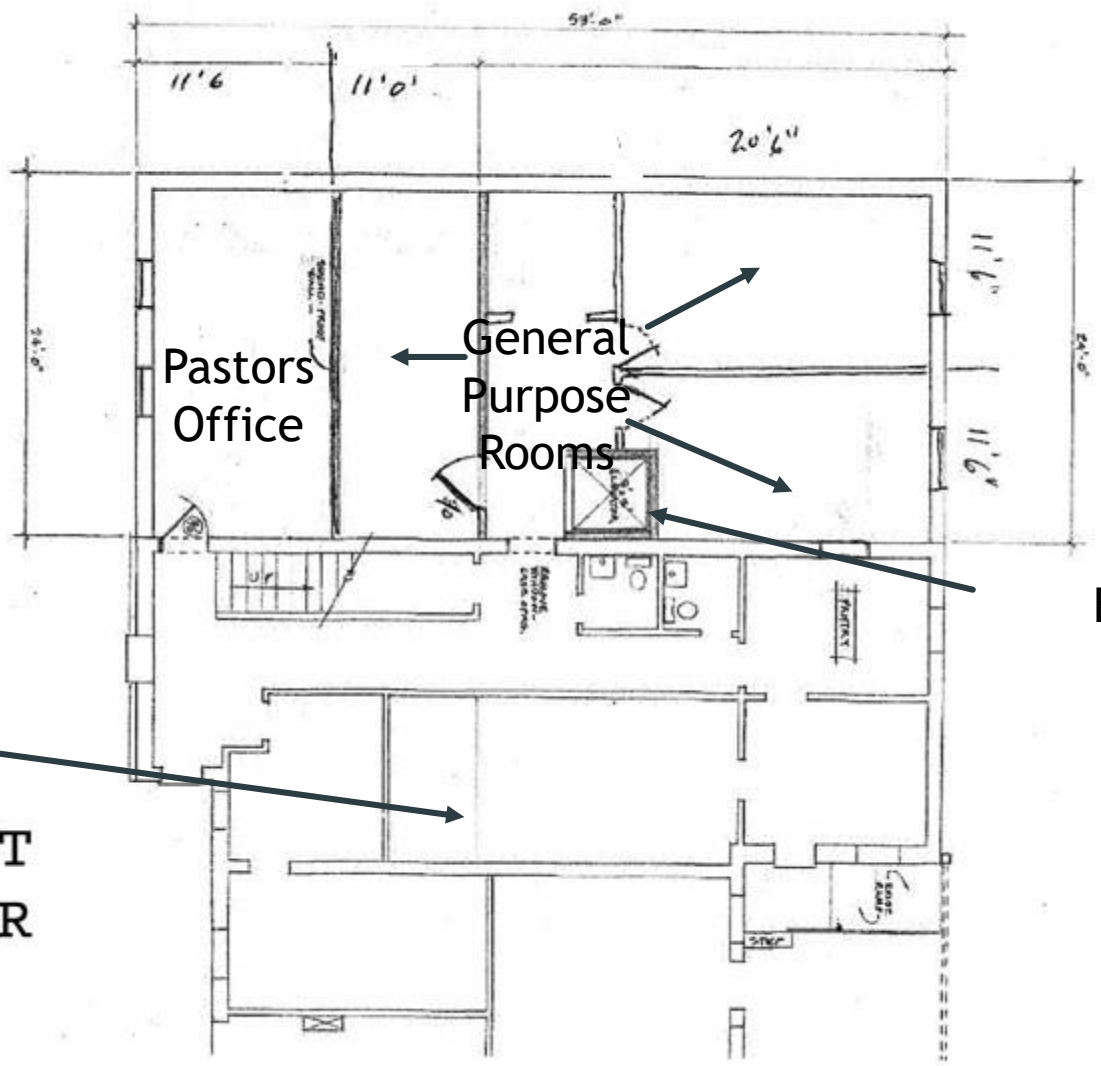
New Roof Lines



Existing



New



Pastors Office

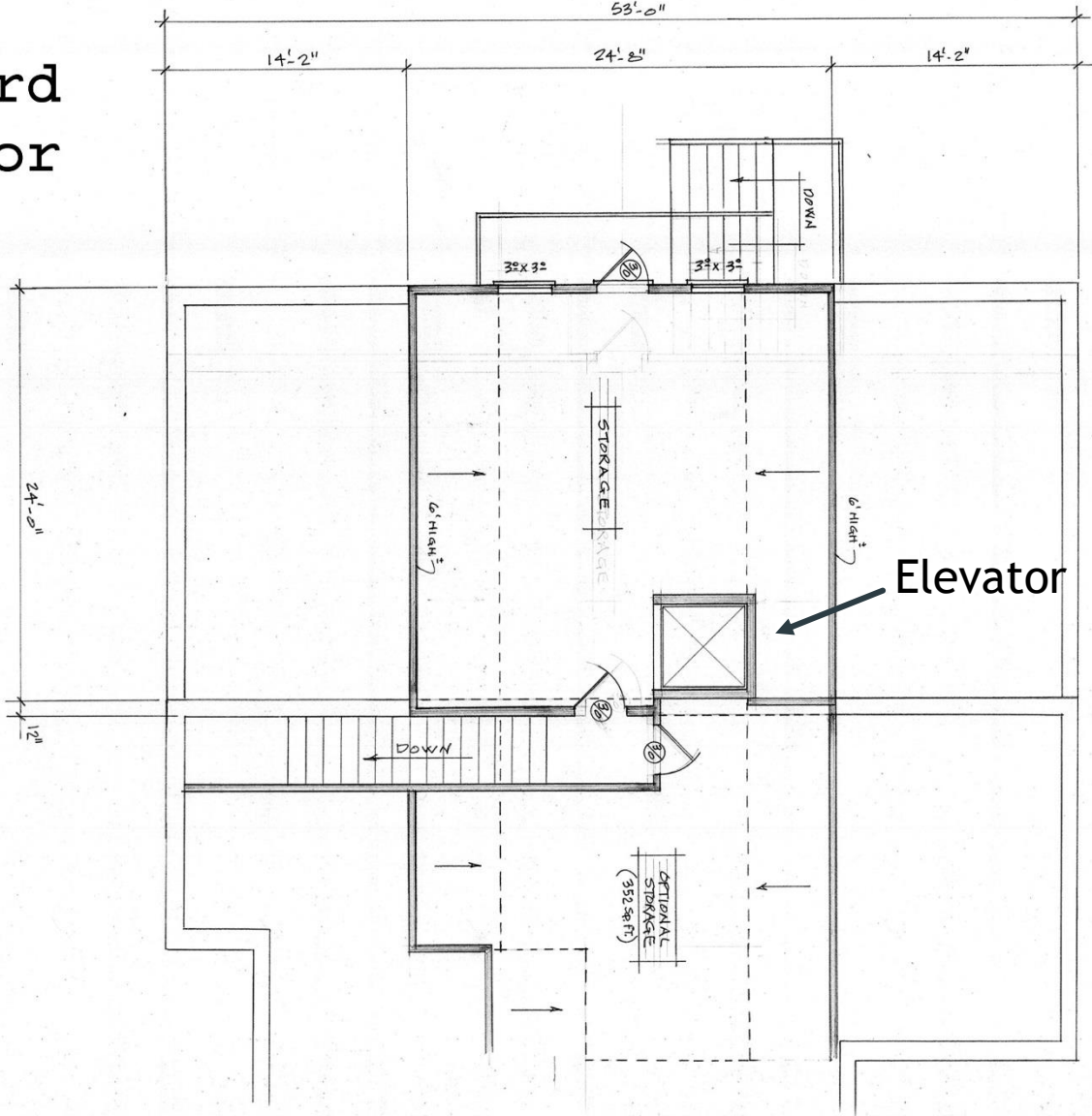
General Purpose Rooms

Elevator

This Area Remains the Same except Pastors Office

FIRST FLOOR

Third Floor



COST

- ▶ Our funding goal is \$450,000
- ▶ Session committed to matching up to half from church reserves up to \$250,000
- ▶ No mortgage, maybe short term financing
- ▶ We are being flexible by pricing items as optional
 - ▶ Elevator, roofing material, siding

WHAT WE NEED FROM YOU

- ▶ \$225,000 over the next 3 years
- ▶ Good News! Some of our members have already committed \$120,000, So we only need another \$105,000
- ▶ Reason for commitments is that we are able to get Short term financing with commitments as collateral if needed
- ▶ Commitments to the renovation must be in addition to normal contributions

Commitment forms are available

Please take one home, discuss, pray,
complete

Bring back anytime, put in offering plate

Or,

Drop in the mail